

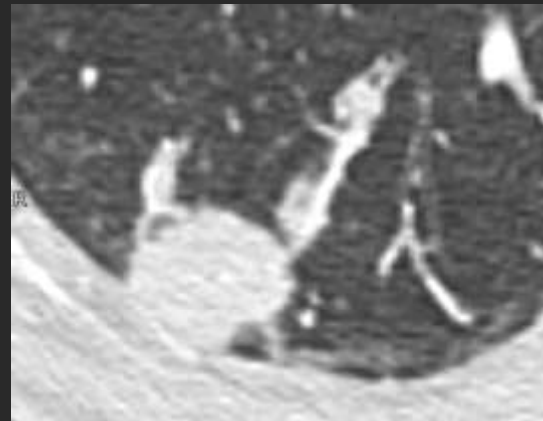
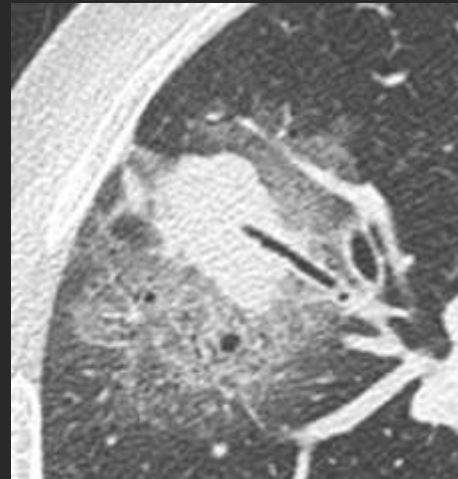
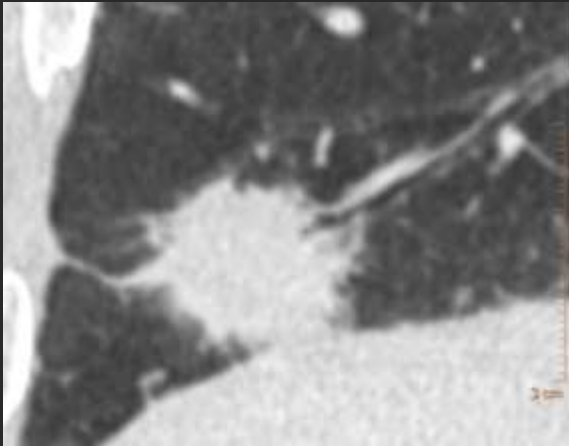


# Bronchus sign: c'est quoi? Intérêt?

P. Fajadet, J Giron, S. Collot, et le  
Club Thorax

**Bronchus sign:** bronche arrive dans ou au contact d'un nodule pulmonaire périphérique

Tsuboi, Cancer 1967, 4 types

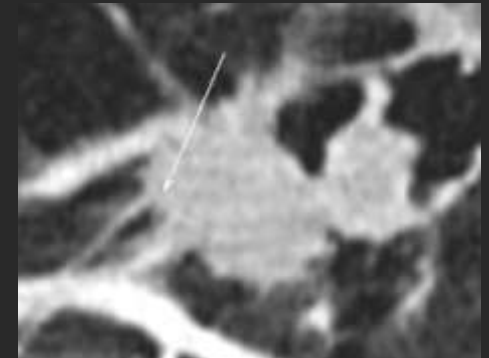


# Bronchus sign: Lésions B et M

TM Primitives( Stt > 2 cm)

Carcinome Cell Squameuses, Stt Type 1

Ad K , Plutôt Type 2



Choi Europ Radiol 2000

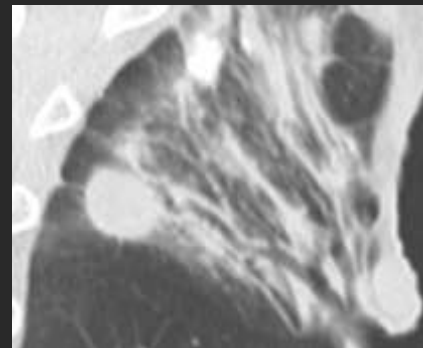
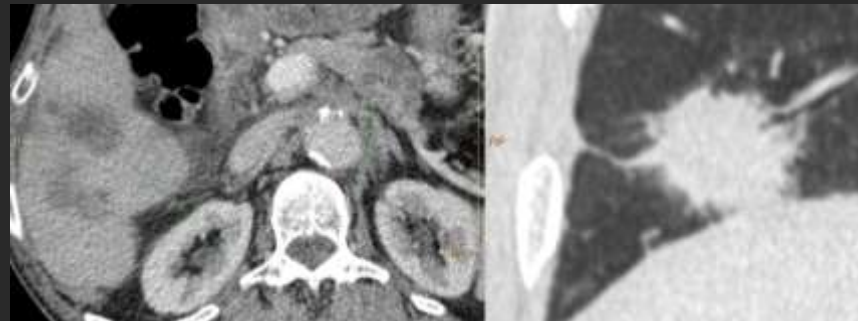
Métastase

Lésions Bénignes:

inflammatoires

tuberculome

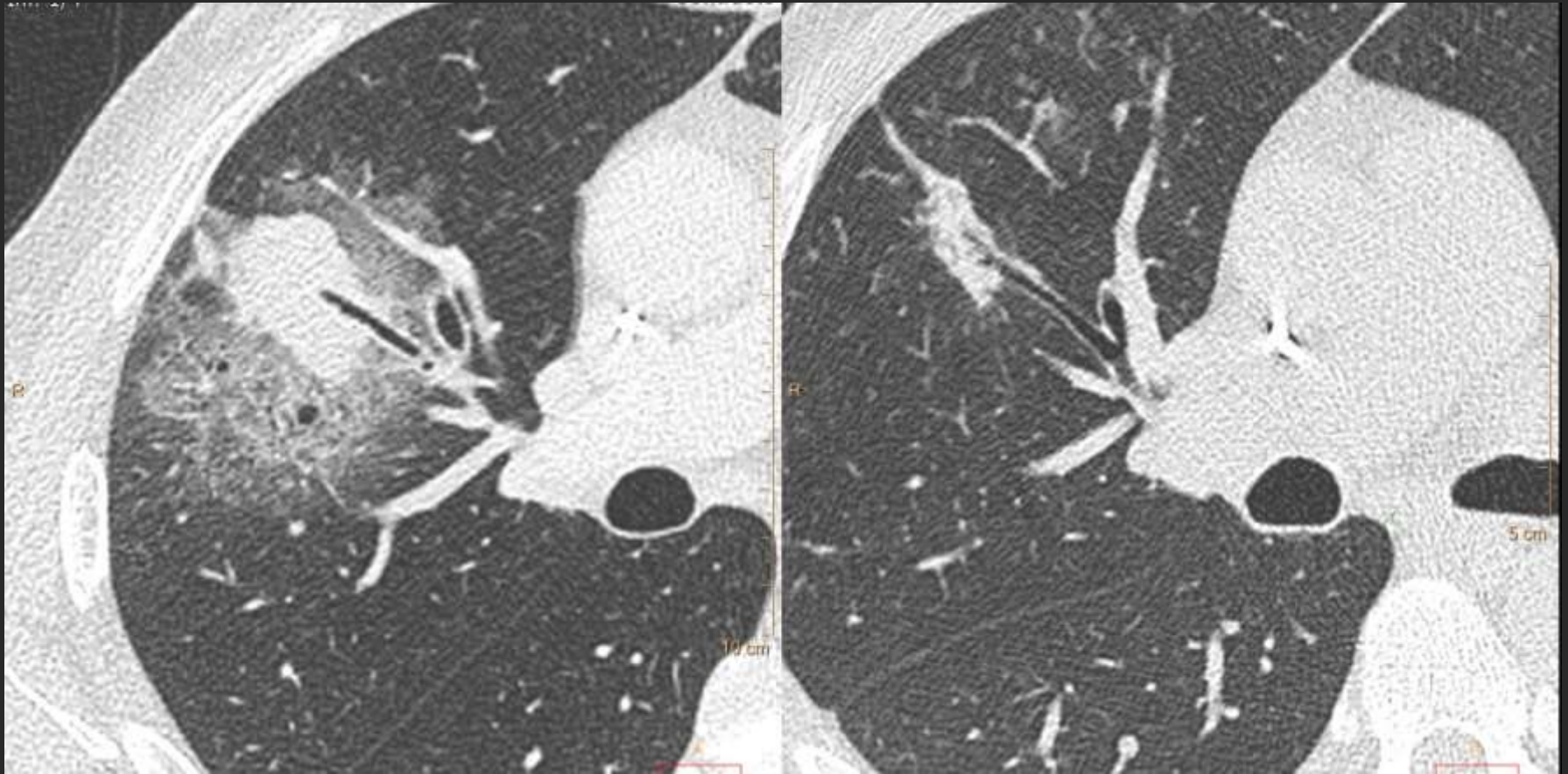
Infarctus pulmonaire



# Néo gastrique: J – 30 avant PBT



# Néo gastrique: J – 30 et J0 avant PBT



# Bronchus sign: Rentabilité diagnostique lors de BTB +++

Gaeta, BS + et Bronche 4<sup>o</sup> ordre et -: 90%

5-7<sup>o</sup> ordre: 33%

*Bilaçeroglu* BS +(3-5) = 82% vs BS - = 44%

Order of leading bronchus	BS		FB-positive	
	+	-	n	%
Third	15		11	73
Fourth	18		16	89
Fifth	16		13	81
Total	49		40	82
Undetermined		43	19	44

BS = bronchus sign; n/% = number/% of patients; +/- = present/absent; FB-positive = fiberoptic bronchoscopy diagnostic.

Gaeta M AJR 1991;157: 1181-85

*Bilaçeroglu* S Respiration 1998;65:49-55

# Bronchus sign: Rentabilité diagnostique lors de BTB +++

Seijo, ENB Bronchoscopie

Dg: Bronchus sign +: 79%

- : 31%

Minezawa, EBUS- GS Bronchoscopie

Dg TM: Bronchus sign + : > 90%

- : < 40

Seijo L Chest 2010; 138: 1316- 21

Minezawa T BMC Med Im 2015 15: 21

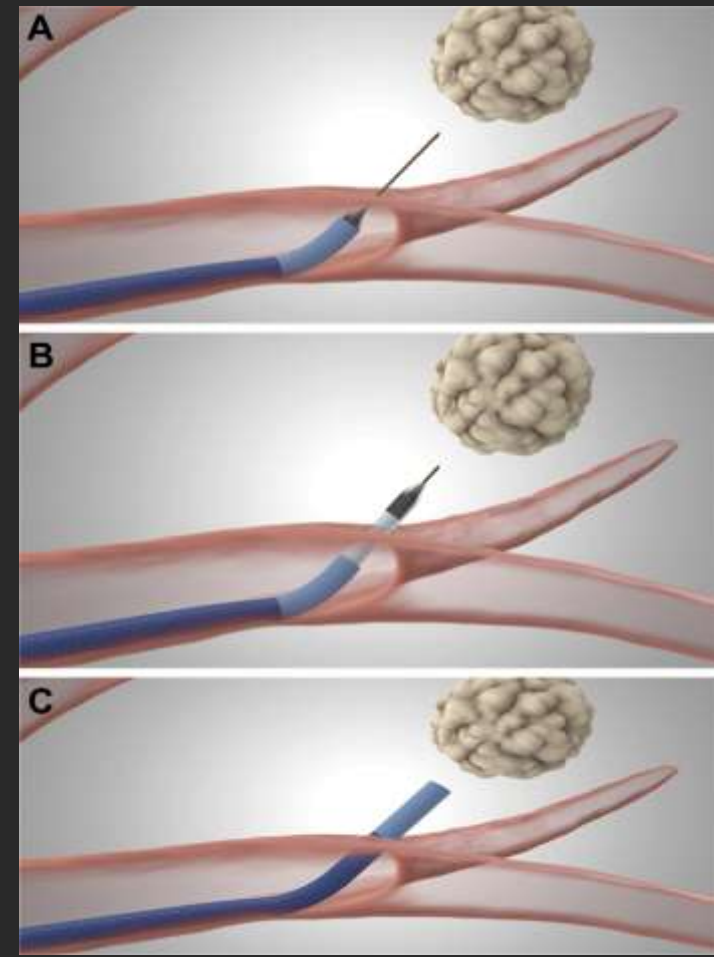
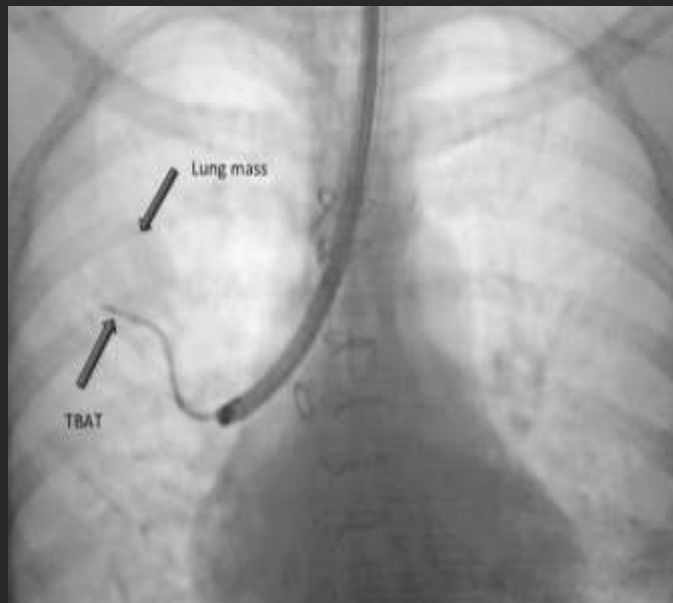


# Nodule périph. < 2cm et BS – = Biopsie sous Scanner ?

## Feasibility and Safety of the Transbronchial Access Tool for Peripheral Pulmonary Nodule and Mass

Mark R. Bowling, MD, Craig Brown, MD, and Carlos J. Anciano, MD

Ann Thorac Surg 2017;104:443–9)





# Bronchus sign: Take home message

BS = Le + souvent TM le + souvent  
Primitive, mais pas que

Un BS + améliore la rentabilité diagnostique  
de la BTB