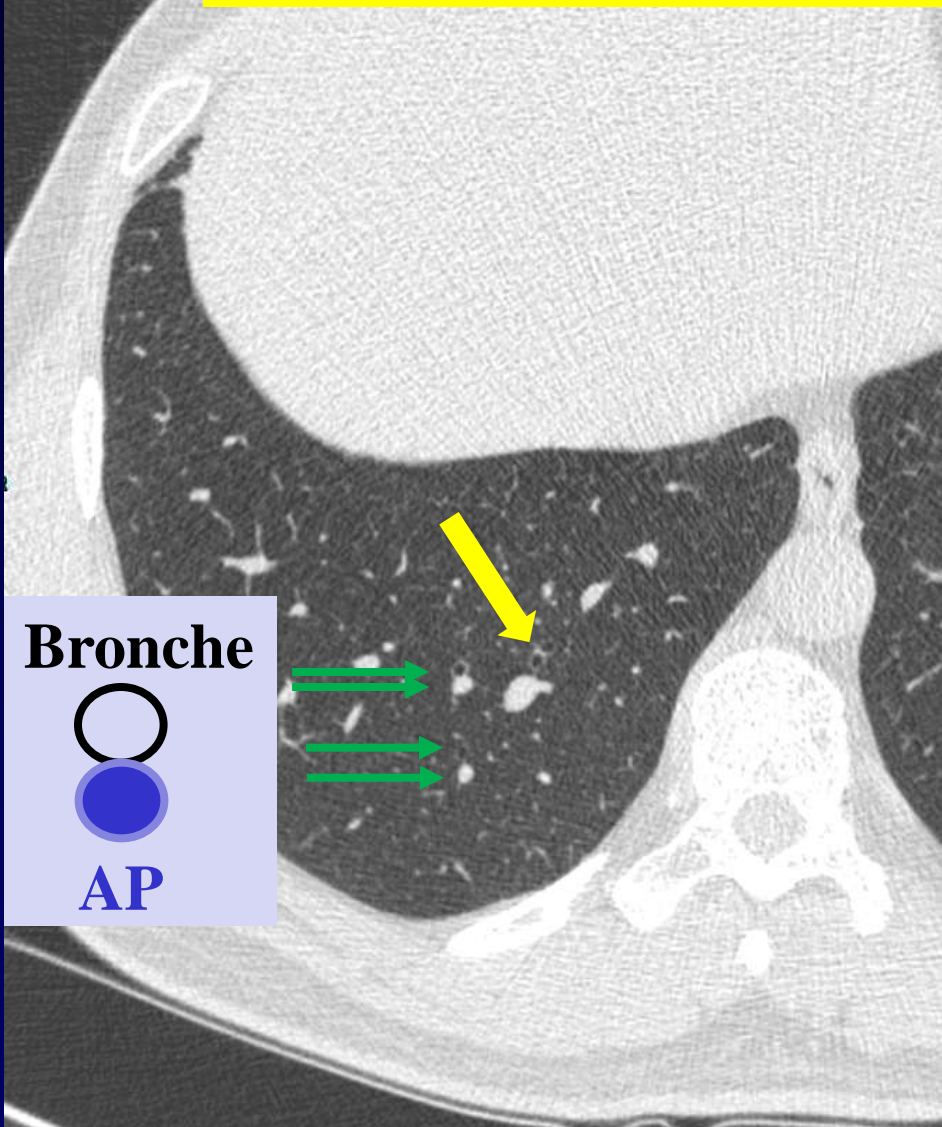




**Emission : Un signe... Un destin...**

**Episode: La bronche orpheline...  
Mythe ou réalité !**

# Bronche sans son Artère Pulmonaire satellite

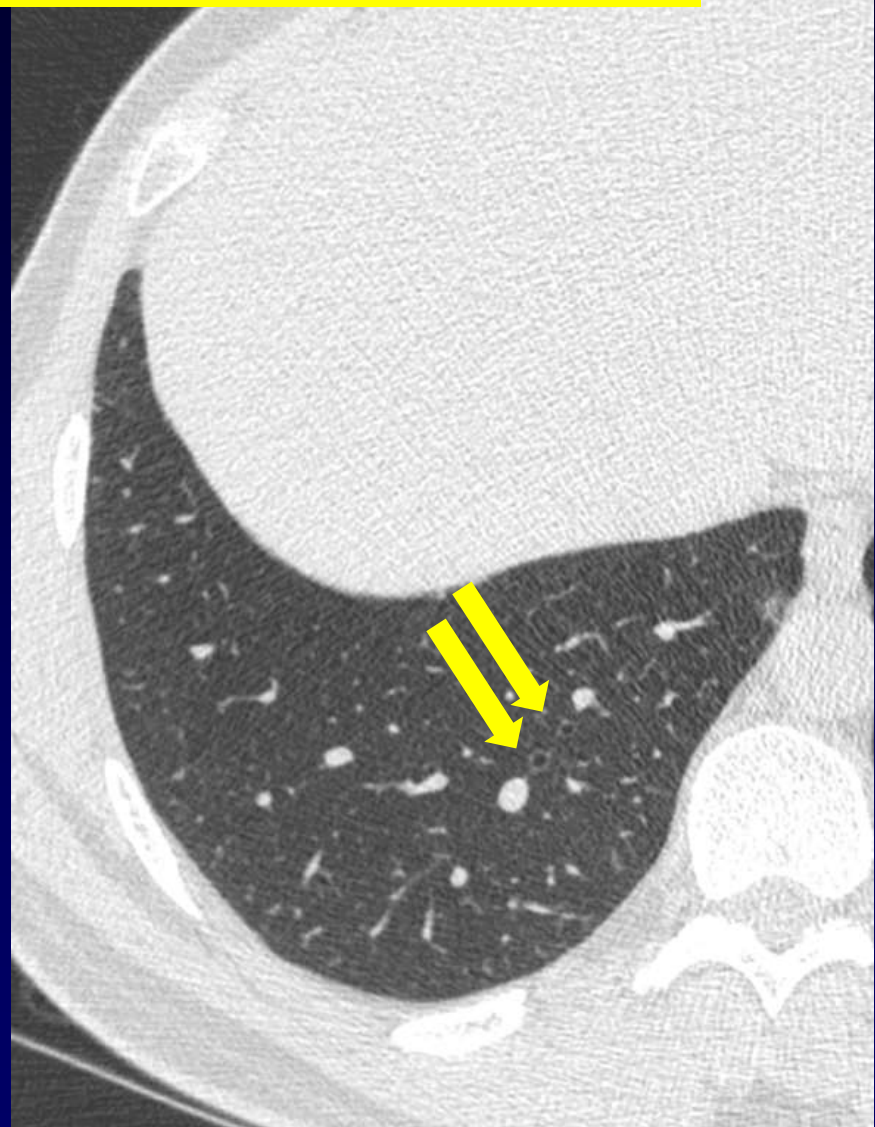


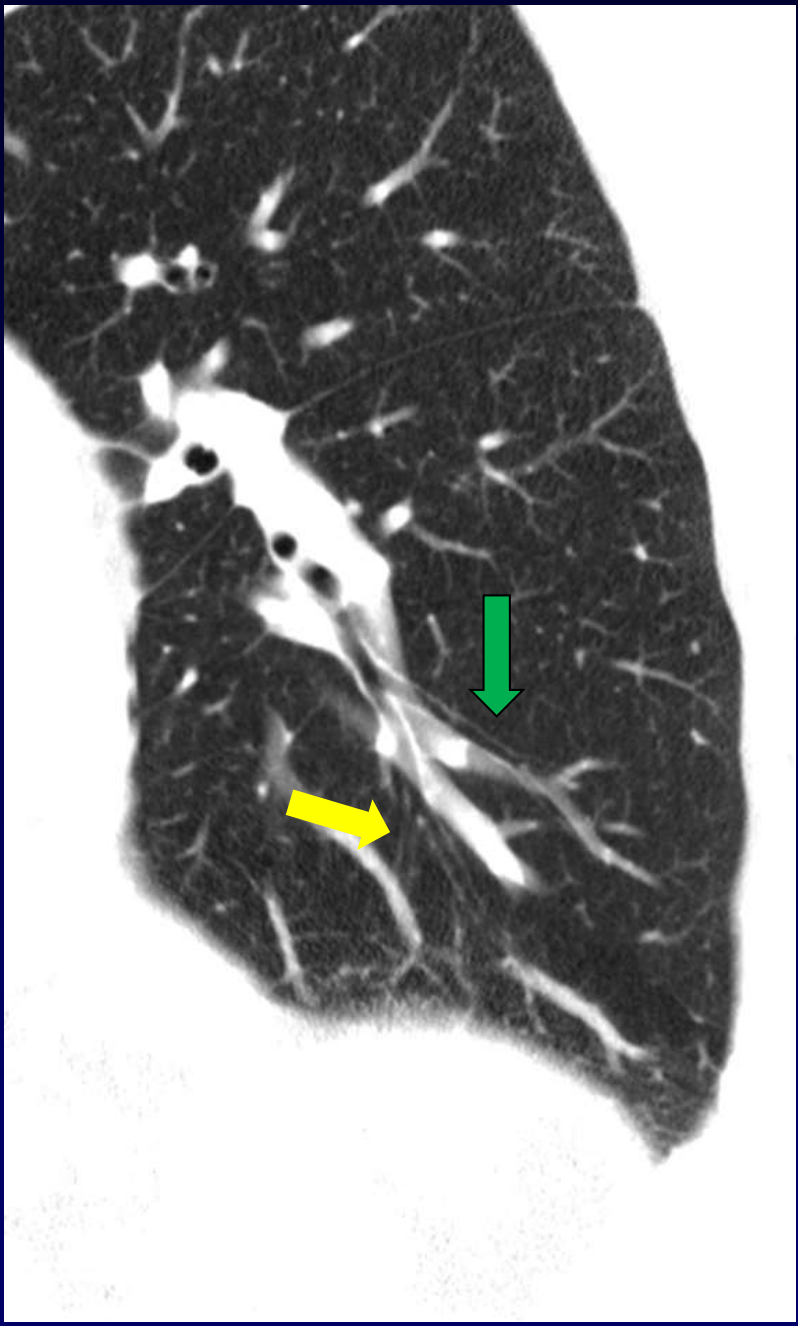
**Bronche**

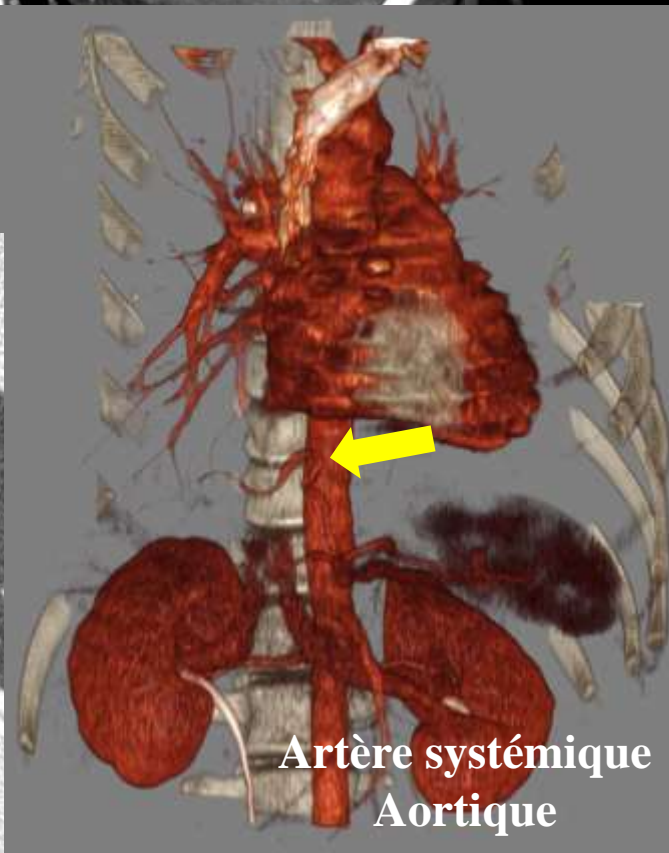
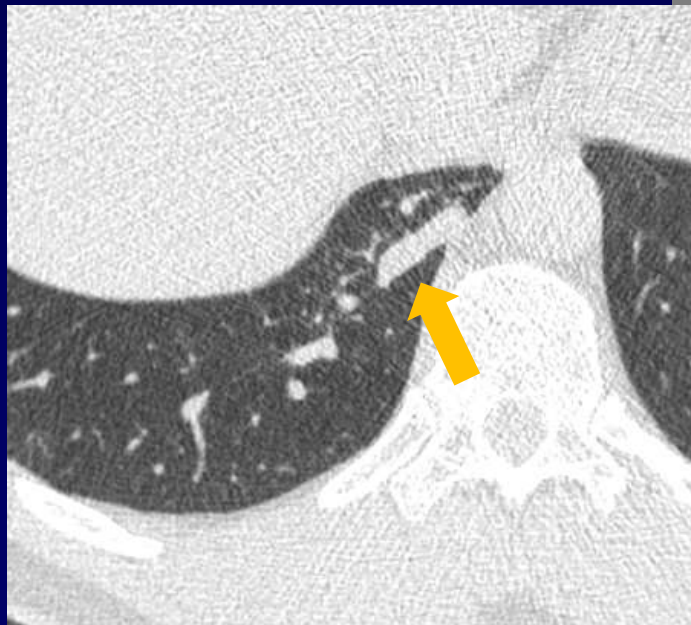
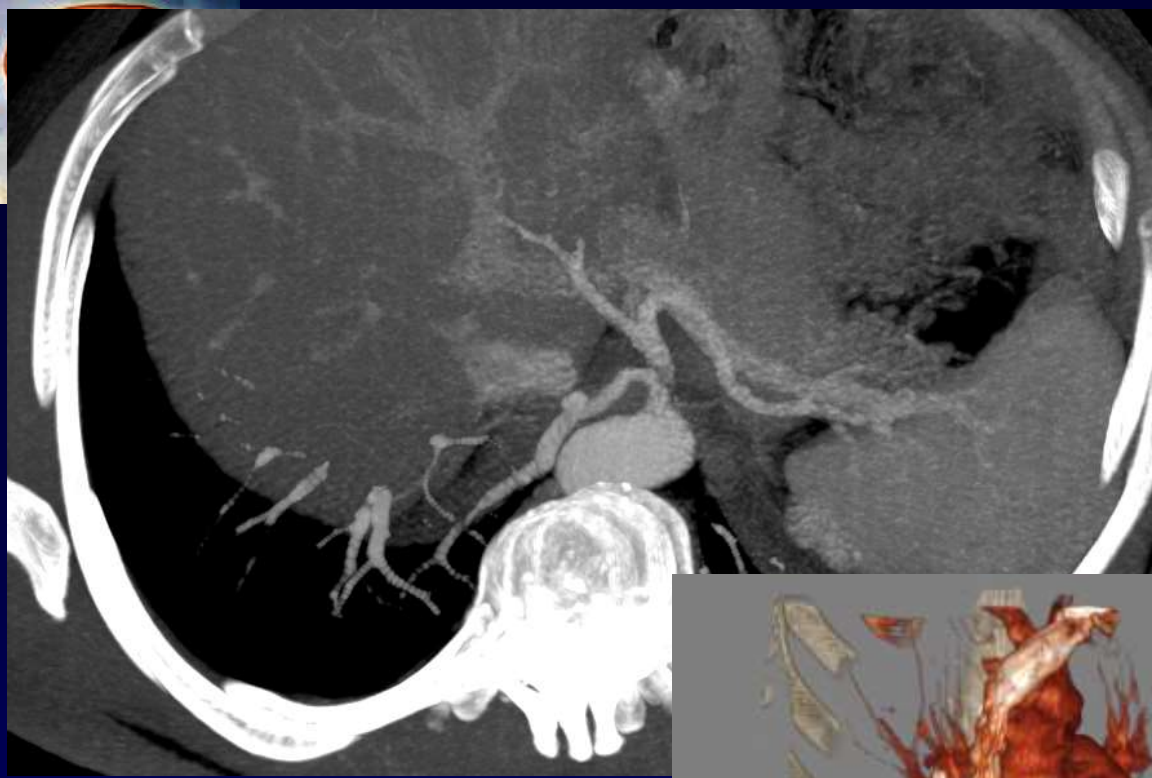
○

●

**AP**





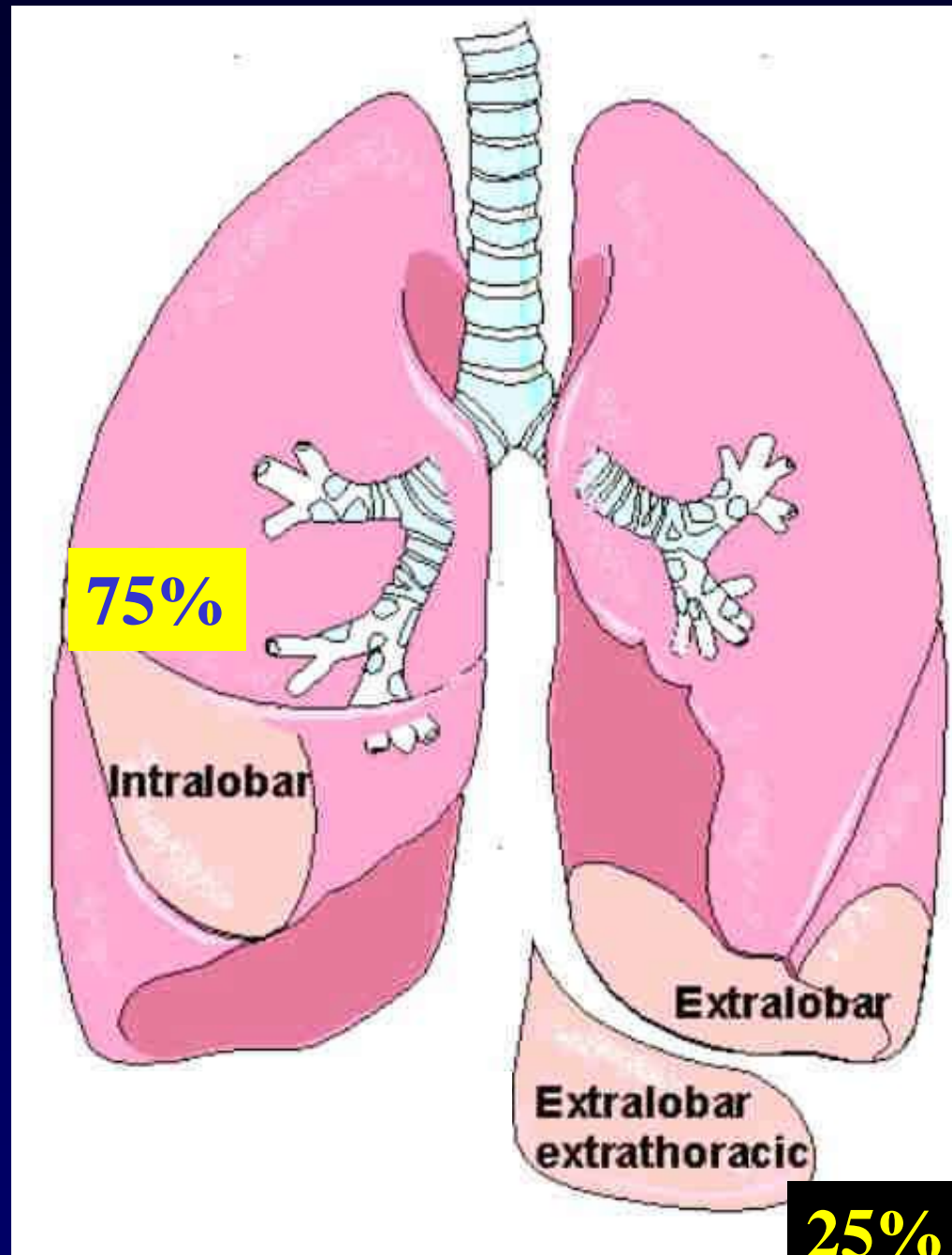


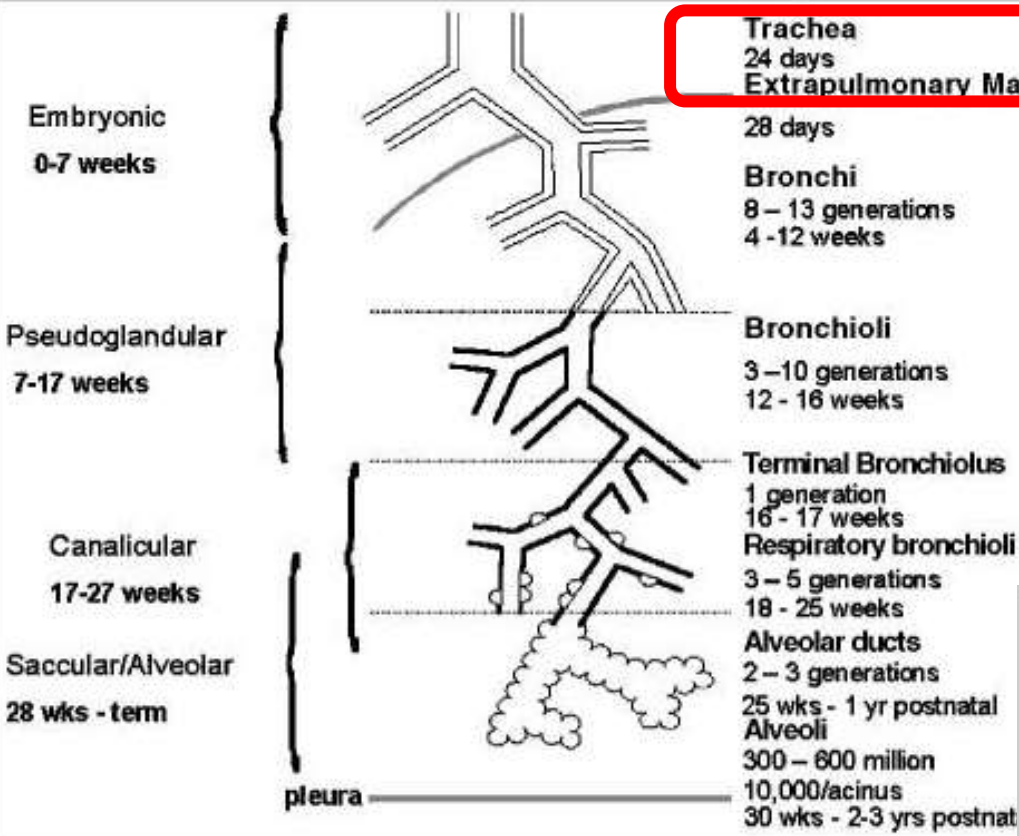
**Séquestration  
Intralobaire  
Pryce I**

Artère systémique  
Aortique

# Séquestration pulmonaire

- Anomalie congénitale de l'intestin primitif
- Bourgeon pulmonaire accessoire qui migre distalement / bourgeon normal suivant la migration de l'œsophage
- +/- déconnecté de ses structures artérielles pulmonaires et/ou bronchiques
- Vascularisé par un vx splanchnique
- Intra ou extra-lobaire selon le développement pleural



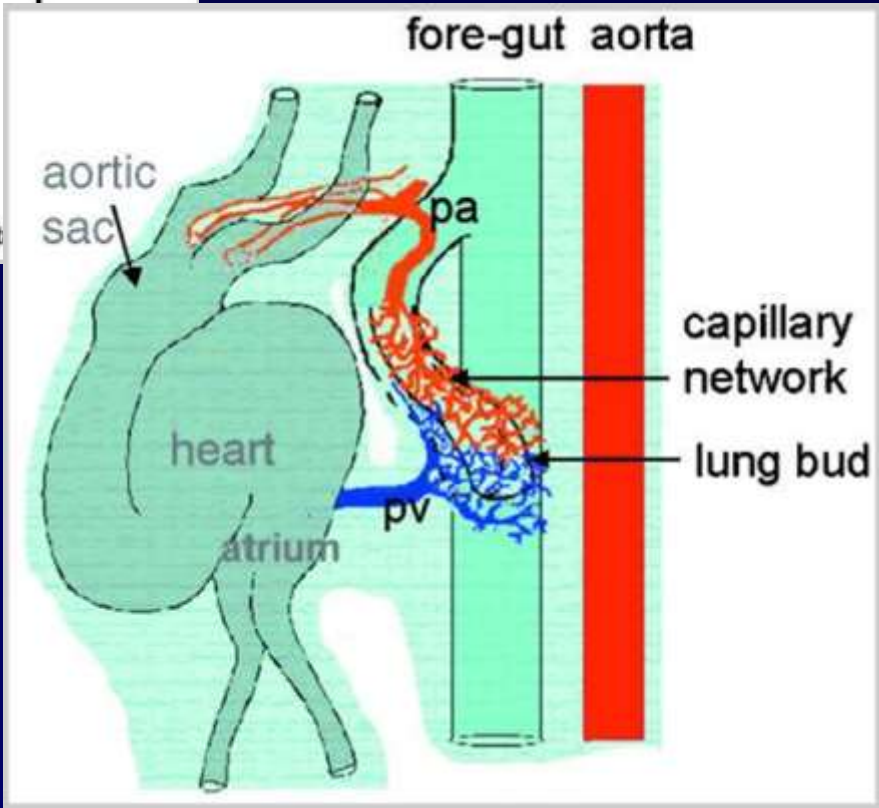


**Trachea**  
 24 days  
 Extrapulmonary Main Bronchus

**28<sup>ème</sup> jour**

Groupe de cellules endothéliales  
 Et musculaires lisses autour des  
 bourgeons bronchiques

32<sup>ème</sup> jour  
 Plexus capillaires de Huntington



**La bronche  
 Unique !**