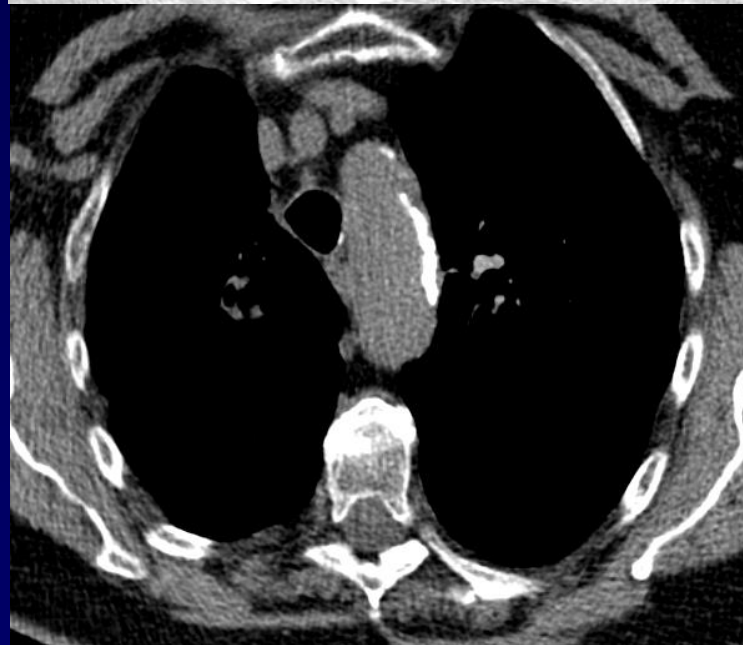
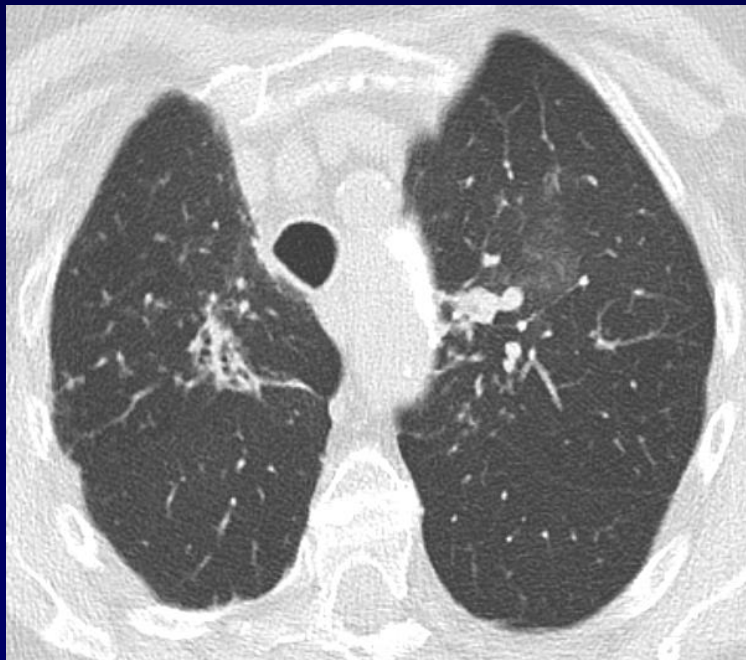
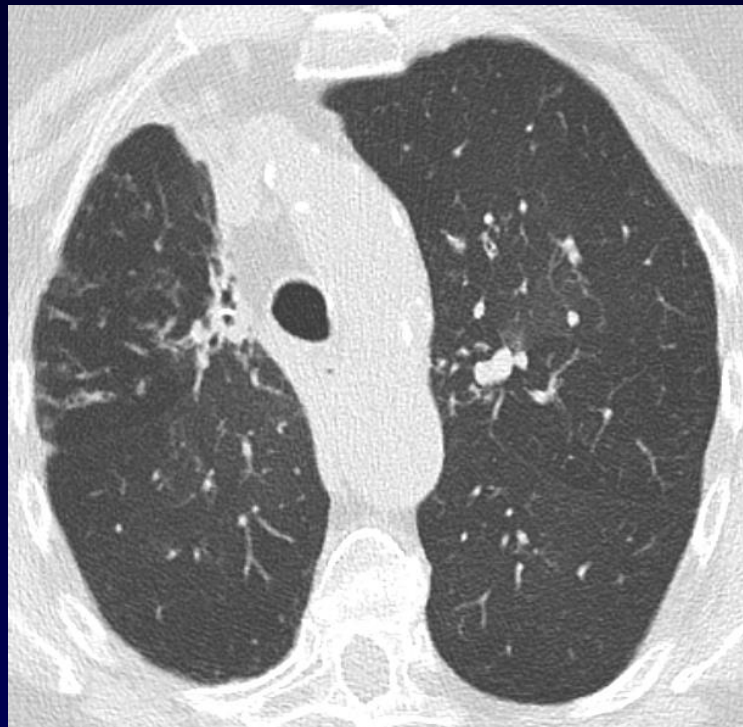
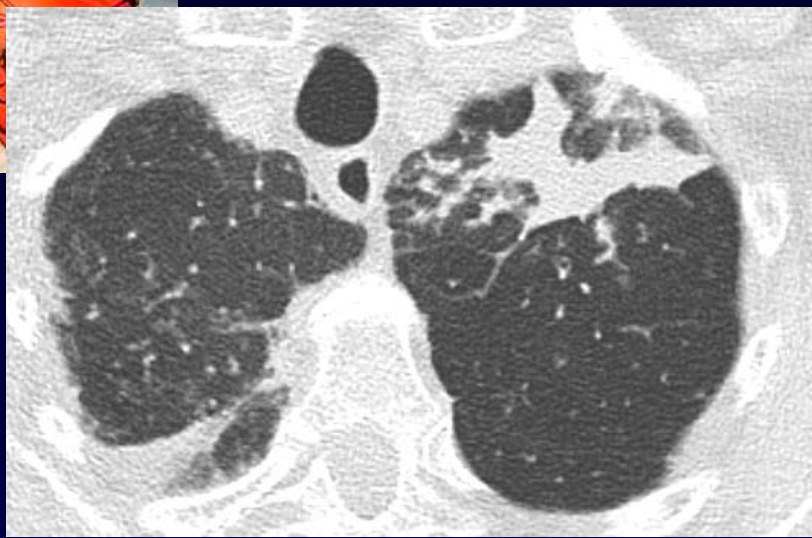
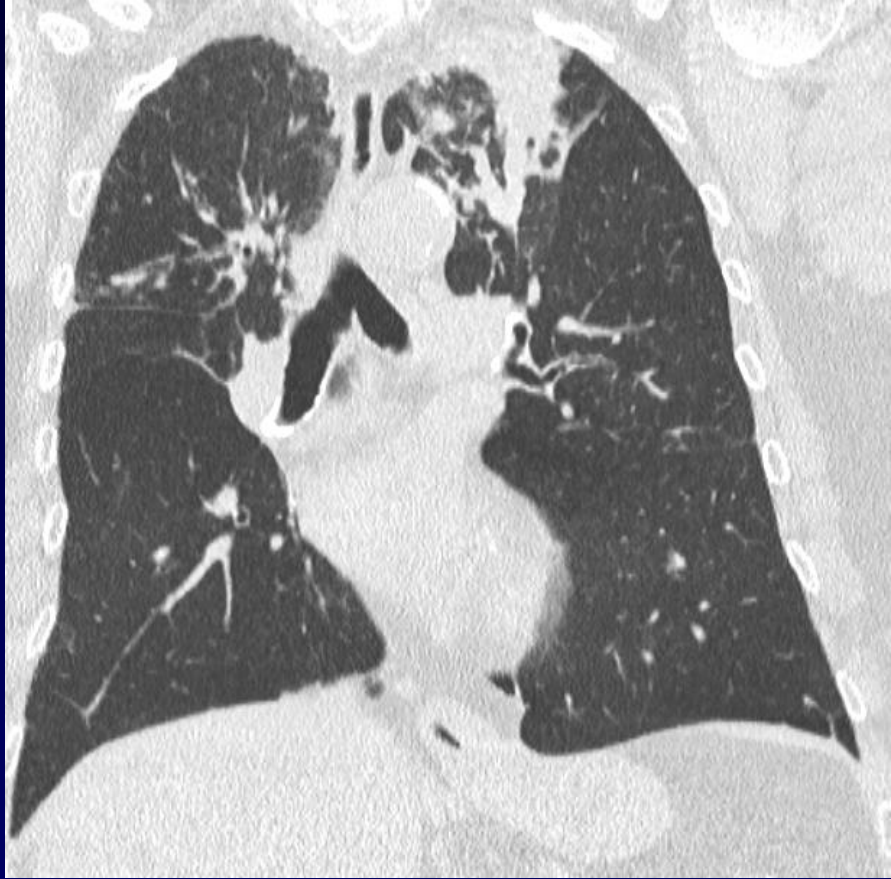




- ✓ Femme de 80 ans
- ✓ Dyspnée grade 3 mMRC
- ✓ Bronchite à répétition
- ✓ Tabagisme arrêté il y a 20 ans
- ✓ Diagnostic de BPCO remis en cause récemment par un pneumologue qui pense à un asthme
- ✓ Biologie : éosinophilie sanguine à 10%
- ✓ ATCD: cancer du sein avec radiothérapie il y a 17 ans





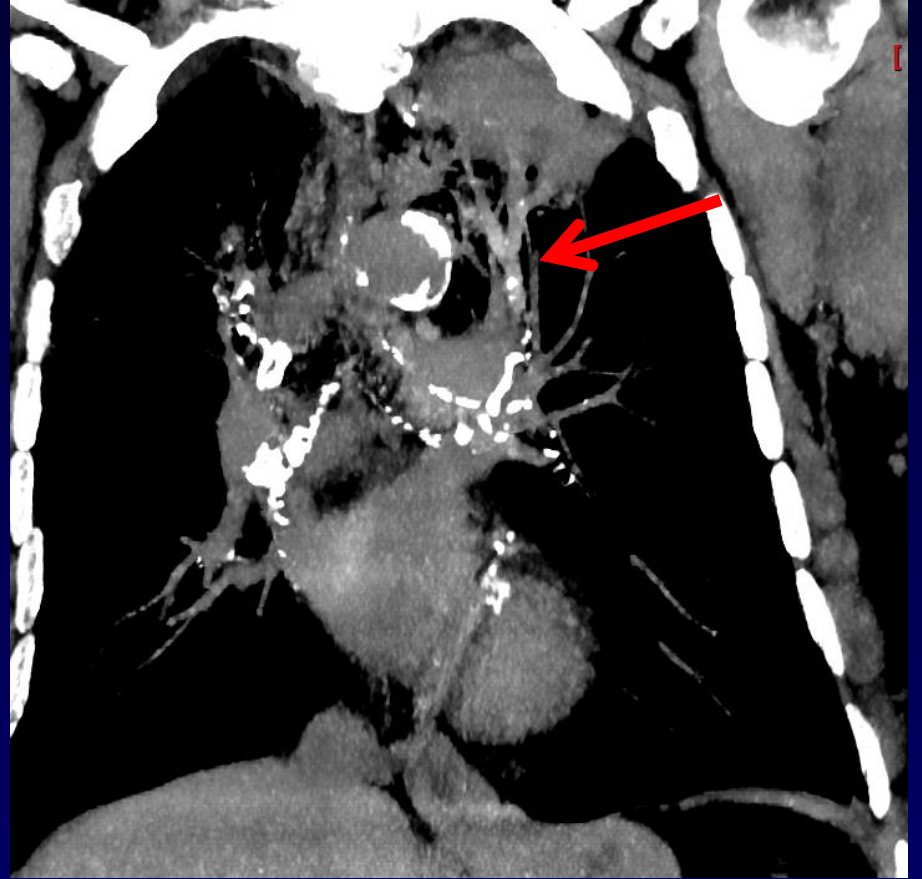
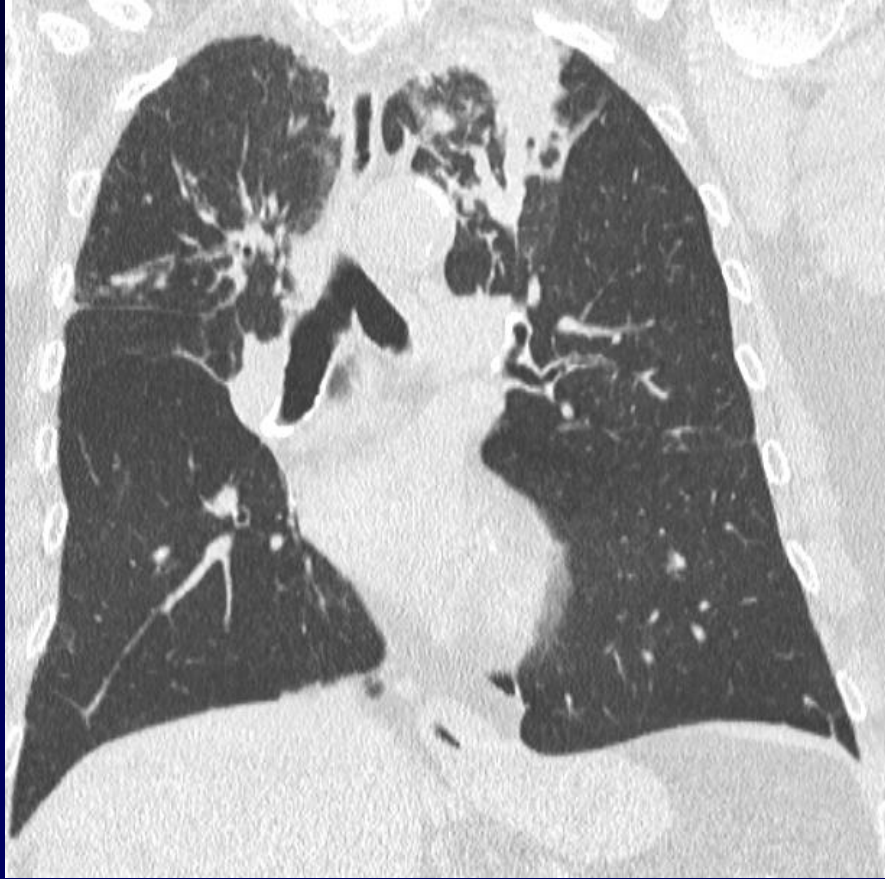


Diagnostic ?



Diagnostic

**Aspergillose bronchopulmonaire allergique
(ABPA)**



Moulages bronchiques hyperdenses

TABLE 2 Evolving diagnostic criteria for allergic bronchopulmonary aspergillosis (ABPA)

Rosenberg–Patterson criteria [73, 74]

Major criteria

Asthma

Presence of transient pulmonary infiltrates (fleeting shadows)

Immediate cutaneous reactivity to *Aspergillus fumigatus*

Elevated total serum IgE

Precipitating antibodies against *A. fumigatus*

Peripheral blood eosinophilia

Elevated serum IgE and IgG to *A. fumigatus*

Central/proximal bronchiectasis with normal tapering of distal bronchi

Minor criteria

Expectoration of golden brownish sputum plugs

Positive sputum culture for *Aspergillus* species

Late (Arthus type) skin reactivity to *A. fumigatus*

Minimal essential criteria [19]

Asthma

Immediate cutaneous reactivity to *A. fumigatus*

Total serum IgE >1000 ng·mL⁻¹ (417 kU·L⁻¹)

Elevated specific IgE-/IgG to *A. fumigatus*

Central bronchiectasis in the absence of distal bronchiectasis

Truly minimal criteria [18]

Asthma

Immediate cutaneous reactivity to *A. fumigatus*

Total serum IgE >1000 ng·mL⁻¹ (417 kU·L⁻¹)

Central bronchiectasis in the absence of distal bronchiectasis

ISHAM working group [68]

Predisposing conditions

Bronchial asthma

Cystic fibrosis

Obligatory criteria (both should be present)

Type I *Aspergillus* skin test positive (immediate cutaneous hypersensitivity to *Aspergillus* antigen)
or elevated IgE levels against *A. fumigatus*

Elevated total IgE levels (>1000 IU·mL⁻¹)#

Other criteria (at least two of three)

Presence of precipitating or IgG antibodies against *A. fumigatus* in serum

Radiographic pulmonary opacities consistent with ABPA

Total eosinophil count >500 cells·μL⁻¹ in steroid naïve patients (may be historical)

ISHAM: International Society for Human and Animal Mycology. #: if the patient meets all other criteria an IgE value <1000 IU·mL⁻¹ may be acceptable.
